

# Bumblebees vs. Honeybees

## What's the Difference?



By Robert Engelhardt via Wikimedia Commons

**Bumblebee**



By Xosema (Own work) via Wikimedia Commons

**Honeybee**

Bumblebees and honeybees are both bees. Both are yellow and black. Both collect nectar. Both collect pollen. Both pollinate flowers. Both can sting. But this is where the similarities end.

### Honeybees

Honeybees often make their hives in hollow trees. Their hives are big. They are made out of neat honeycombs. Thousands of bees live in them. The bees can live through the winter. They stay in their hives all winter. They bunch together to keep warm.

Honeybees work between 3–12 hours per day. They make a lot of honey. They make more than they can use. They make enough for humans to eat.

Honeybees can sting. But they only sting when under attack. A honeybee can only sting once. It dies afterward.

---

## Bumblebees vs. Honeybees

---

### Bumblebees

Bumblebees look like big, fuzzy honeybees. They make their hives in the homes of other animals. The queen searches for underground burrows made by small animals. She also looks for birdhouses. Queens are fierce. They will chase animals from their homes.

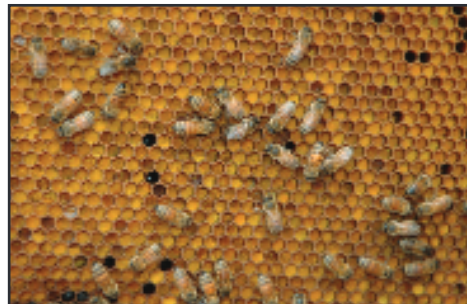
Only queen bumblebees live through the winter. The other bumblebees die. The queen hibernates. She wakes up in the spring. Then she looks for a good place to make a hive.

Once she finds a good place, the queen gets very busy. She builds special pots out of wax. She lays a few eggs in each one. She lays about 50 workers at the start of the season. She seals her eggs inside the pots. Then she collects honey. She puts the honey in the honey pots. This is what her workers will eat once they hatch.



By Panoramedia (Own work) via Wikimedia Commons

**Bumblebee hive**



By Migco (Own work) via Wikimedia Commons

**Honeybee hive**

Bumblebees do not make hives from honeycomb. They make little pots of wax. The pots of wax are underground. Bumblebee hives are small. Each hive has about 500 bees at most.

---

## Bumblebees vs. Honeybees

---

Bumblebees are the busiest bees. They work 18 hours per day. Greenhouse farmers prefer bumblebees for this reason. Greenhouse farmers grow fruits or vegetables inside a greenhouse. Tomato farmers prefer bumblebees, too. Tomato flowers have pollen that is very hard to remove. Bumblebees know just how to buzz to get the pollen to fall off. They pollinate more tomato plants. This means that more tomatoes will grow.

Bumblebees can sting more than once. They can sting again and again. They don't usually sting unless they are under attack.

# Bumblebees vs. Honeybees

## What's the Difference?



By Robert Engelhardt via Wikimedia Commons

**Bumblebee**



By Xosema (Own work) via Wikimedia Commons

**Honeybee**

Bumblebees and honeybees have many things in common. They are both yellow and black. They both collect nectar and pollen and pollinate flowers. And, of course, both species can sting. But this is where the similarities end.

### Honeybees

Honeybees often make their hives in hollow trees. Their hives consist of neat honeycombs and house thousands of bees. Honeybees survive through the winter by staying in their hives and bunching together to keep warm.

Honeybees work between 3–12 hours per day. They produce far more honey than they can use. They make enough for humans to harvest the honey without harming the hive.

Honeybees usually only sting when threatened. But they can only sting once because they die afterward.

---

## Bumblebees vs. Honeybees

---

### Bumblebees

Bumblebees look like big, fuzzy honeybees. They make their hives in the homes of other animals. The queen searches for underground burrows made by small animals or for birdhouses. Queens are fierce. They will chase much larger animals from their homes.

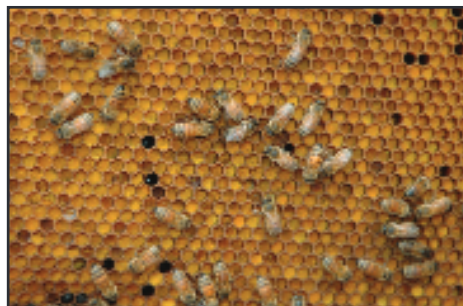
Only queen bumblebees live through the winter. The other bumblebees in a hive will die off come wintertime. The queen bumblebee hibernates through the winter. She wakes up in early spring. Her fuzzy coat keeps her warmer than honeybees. She can work in much cooler temperatures than honeybees.

Once the queen finds a good spot, she makes herself at home. She builds special pots out of wax, lays several eggs in each one, and then seals them up. She lays about 50 workers at the start of the season. Then she gets to work on her honeypots, making sure that there's enough honey for her workers to eat once they hatch.



By Panoramedia (Own work) via Wikimedia Commons

**Bumblebee hive**



By Migco (Own work) via Wikimedia Commons

**Honeybee hive**

Bumblebee hives look very different from honeybee hives. Bumblebees do not make honeycombs with six-sided cells. They make little pots out of wax instead. Bumblebee hives are much smaller than honeybee hives, housing up to about 500 bees at a time.

---

## Bumblebees vs. Honeybees

---

Bumblebees are the busiest bees and work up to 18 hours per day. Greenhouse farmers prefer to keep bumblebees for this reason. Greenhouse farmers grow fruits or vegetables inside greenhouses. Tomato farmers prefer bumblebees because of their bumble and buzz. The pollen on tomato flowers is very hard to remove. Honeybees can't do it. But bumblebees know just how to vibrate and buzz to get the pollen to fall off. This means that more tomato plants are getting pollinated. It also means that more tomatoes will grow.

Bumblebees can sting again and again. Like honeybees, they really don't sting unless they are under attack.



# Bumblebees vs. Honeybees

## What's the Difference?



By Robert Engelhardt via Wikimedia Commons

**Bumblebee**



By Xosema (Own work) via Wikimedia Commons

**Honeybee**

Bumblebees and honeybees have many things in common. They are both yellow and black. They both collect nectar and pollen and pollinate flowers. And, of course, both species can sting. But this is where the similarities end.

### Honeybees

Honeybees often make their hives in hollow trees. Their hives consist of neat honeycombs and house thousands of bees. Honeybees survive through the winter by staying in their hives and bunching together to keep warm.

Honeybees work between 3–12 hours per day and produce far more honey than they can use. They make enough for humans to harvest the honey without harming the hive.

Honeybees usually only sting when threatened. But they can only sting once because they die afterward.

### Bumblebees

Bumblebees look like big, fuzzy honeybees. They make their hives in the homes of other animals. The queen searches for underground burrows made by small animals or for birdhouses. Queens are fierce and will chase much larger animals from their homes.

---

## Bumblebees vs. Honeybees

---

Only queen bumblebees live through the winter. The other bumblebees in a hive will die off come wintertime. The queen bumblebee hibernates through the winter. She emerges from her burrow in early spring. Her fuzzy coat keeps her warmer than honeybees. She can work in much cooler temperatures than honeybees.

Once the queen finds a good spot, she makes herself at home. She builds special pots out of wax, lays several eggs in each one, and then seals them up. She lays about 50 workers at the start of the season. Then she gets to work on her honeypots, making sure that there's enough honey for her workers to eat once they hatch.

Bumblebee hives look very different from honeybee hives. Bumblebees do not make honeycombs with six-sided cells. They make little pots out of wax instead. Bumblebee hives are much smaller than honeybee hives, housing up to about 500 bees at a time.



By Panoramedia (Own work) via Wikimedia Commons

**Bumblebee hive**



By Migco (Own work) via Wikimedia Commons

**Honeybee hive**

Bumblebees are the busiest bees and work up to 18 hours per day. Greenhouse farmers prefer to keep bumblebees for this reason. Greenhouse farmers grow fruits or vegetables inside greenhouses. Tomato farmers prefer bumblebees because of their bumble and buzz. The pollen on tomato flowers is very hard to remove. Honeybees can't do it. But bumblebees know just how to vibrate and buzz to get the pollen to fall off. This means that more tomato plants are getting pollinated. It also means that more tomatoes will grow.

Bumblebee stingers do not have a barb. They do not get stuck in your skin. Bumblebees can sting again and again. Like honeybees, they really don't sting unless they are under attack.