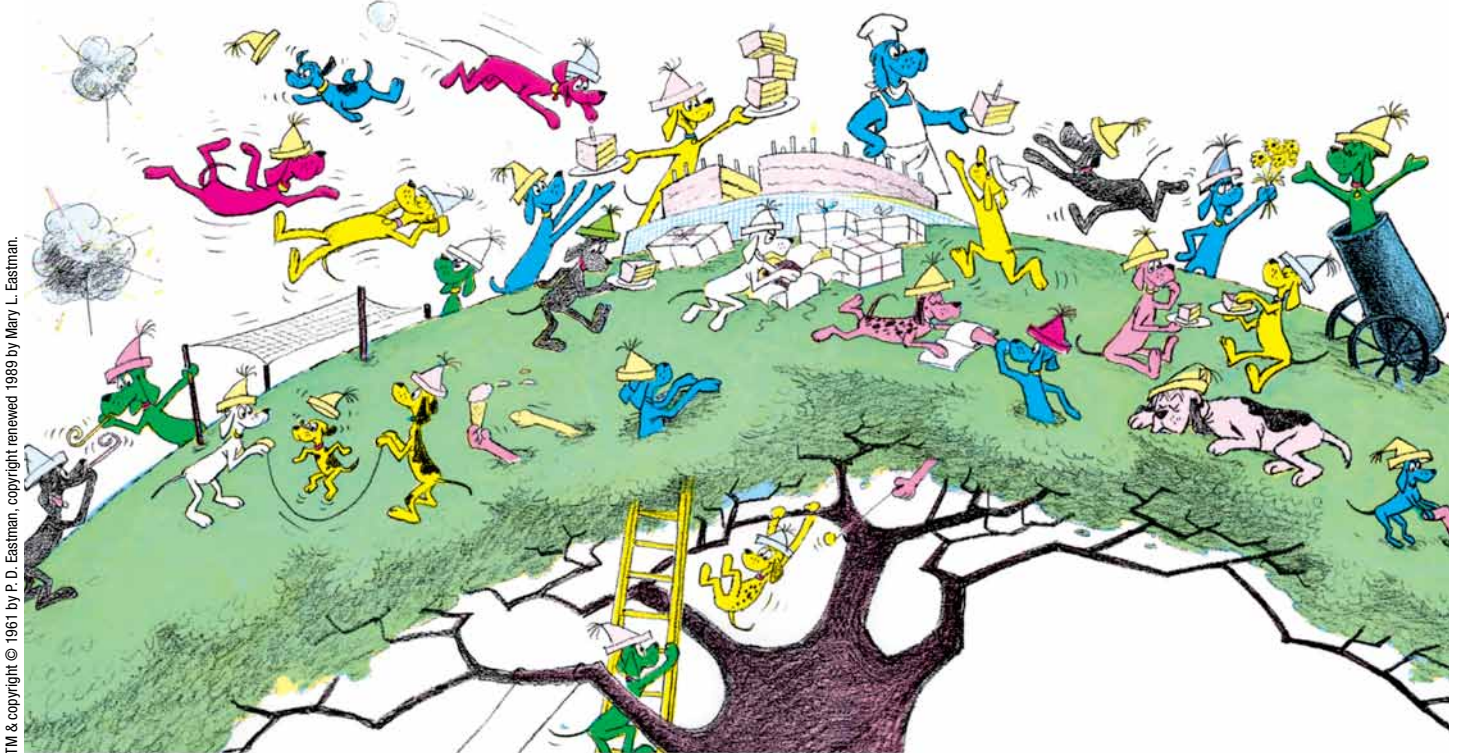


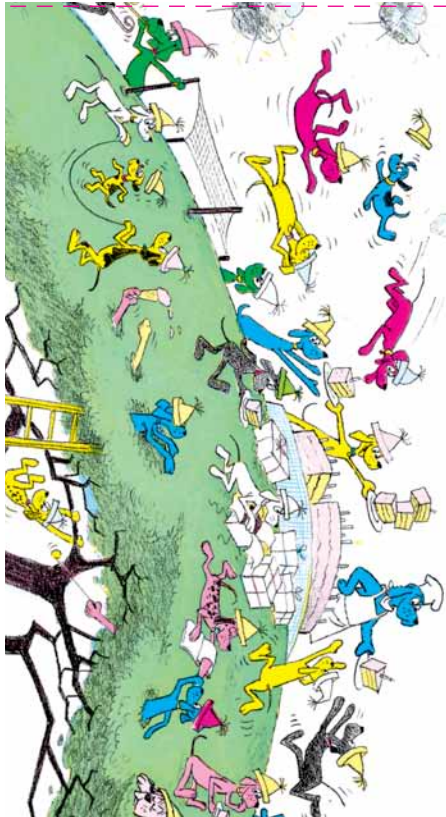
Go, Dog. Go!

Party Kit



TM & copyright © 1961 by P. D. Eastman, copyright renewed 1989 by Mary L. Eastman.

Fold



You're Invited to _____'s Party

Date: _____

Time: _____

Place: _____

RSVP: _____



It'll be a doggone good time!



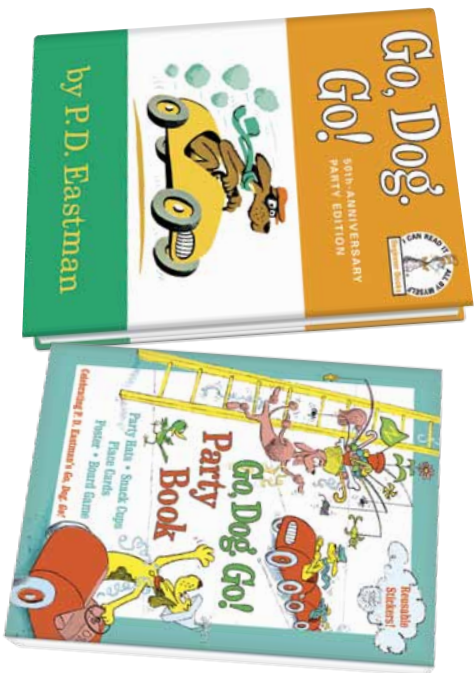
TM & copyright © 1961 by P. D. Eastman, copyright renewed 1989 by Mary L. Eastman.

Fold

Fold



Grab Your Party Hat and
Go, Go, Go!



 **RANDOM HOUSE**
CHILDREN'S BOOKS

www.randomhouse.com/kids

Invitation!

Fold

Party Hat!

TM & copyright © 1961 by P. D. Eastman, copyright renewed 1989 by Mary L. Eastman.

Staple elastic here.



Do You Like My Hat?

Instructions:

1. Cut out along the dotted lines.
2. Color and decorate.
3. Curl the hat into a cone and tape or glue at the edge to secure.
4. Attach elastic cord to the hat by stapling each end where indicated to the inside of the hat.

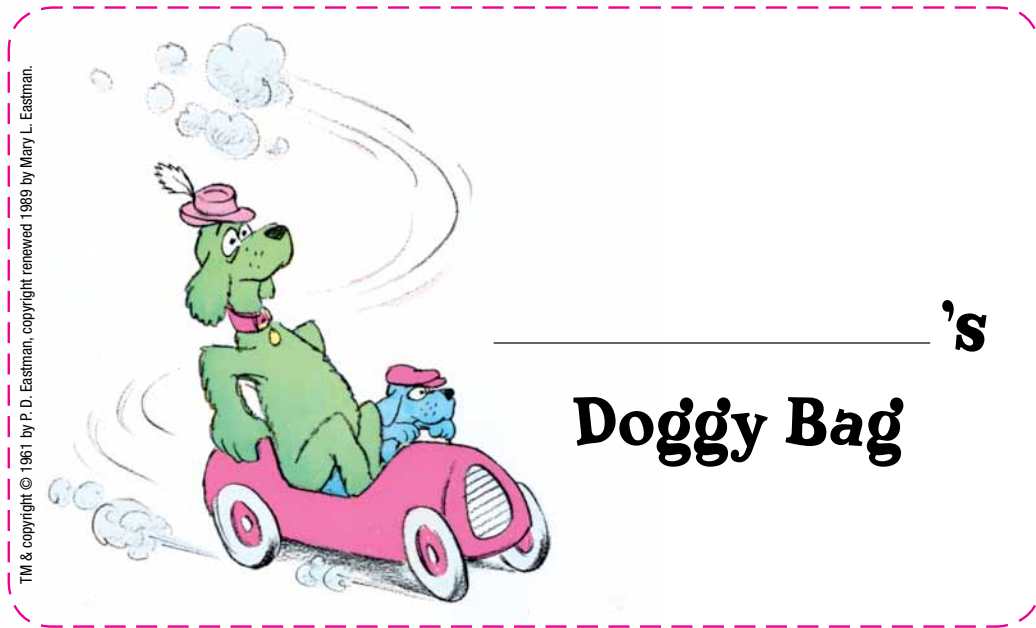
Staple elastic here.

Goody Bags!

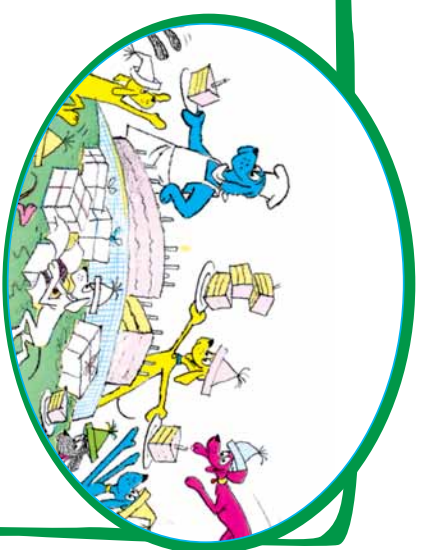


Instructions:

1. Cut out along the dotted lines.
2. Attach the character's head and hands to the top of a paper bag using tape or glue as shown.
3. Attach the nametag to the center of the bag.



“Bone” Appetit



TM & copyright © 1961 by P. D. Eastman, copyright renewed 1989 by Mary L. Eastman.



Name: _____